



JOIN AN

Aparima Catchment Group

Aparima farmers and their catchment groups
are working together to protect our environment
and rural communities





Who and what is ACE?

The Aparima Community Environment (ACE) group is made up of six farmer-led Aparima catchment groups; Orepuki, Pourakino, Waimatuku, Lower, Mid and Upper Aparima and has been operating since 2018.

ACE Communities and landowners look to have farm environment plans, with the longer-term goal of enhancing the mana and resilience of the catchment for future generations.

By understanding the science, impact, innovations and ideas at catchment scale, the ACE group looks to make positive change from the ground up. Through modelling and monitoring, ACE can relate the actions of every single farm plan to show a collective and demonstrable outcome. ACE has multi-agency participation and is leading the way in seeking environmental solutions for farmers, driven and implemented by farmers.

The ACE group looks to support all farmers within the Aparima Catchment to obtain a Farm Environment Plan (FEP), and then implement good farming practices for the environmental risks identified in their FEP to improve freshwater ecosystem health, indigenous biodiversity, soil health, greenhouse gas emissions, community health and involvement and much more.

“We all need a commitment to sustainability and a willingness to be part of the conversation.”

Geordie Eade, Pourakino Catchment Group member and Sheep Farmer



Scan here to see what
ACE has been up to lately

What's Happening?

ACE have come together to develop and implement the “building our future together with our community” project, over the next three years.

ACE have been granted funding for this project through Thriving Southland's Change and Innovation Project. Thriving Southland supports and enables community catchment groups to work together for a better future for all.

The Change and Innovation Project is funded through the Ministry of Primary Industries' Sustainable Land Use Programme.

This community project, is driven and lead by farmers. Harnessing the farmer-led approach, ACE looks to create pathways forward for desirable environmental and economic outcomes.

A photograph showing two people, a woman in a green long-sleeved shirt and a man in an orange long-sleeved shirt, both wearing waders and standing in a shallow stream. They are leaning forward, looking at something in the water, likely performing a water test. The background shows green grass and rocks.

There are 4 main workstreams that make up the ACE community project.

WORK STREAM 1: Lifting farmer and community awareness and engagement through a journey of stream walks and water testing.

Understanding more about what is in our water!

Stream walks are open to all and look to engage local communities to explore what is in our waterways and identify opportunities for improvement. Participants will be able to undertake a facilitated walk from the mountains to the sea. During each stream walk a SHMAK kit will be used and we look to complete a Rapid Habitat Assessment, check out some macro invertebrate monitoring, riparian condition assessment methods and a chance to see an eDNA test in use.

This will allow landholders to identify areas of good water way management and areas where there is a room for improvement.

Increasing public and community knowledge of ecosystem health, biodiversity and much more.

Further, the ACE project is building awareness and engagement within the urban and rural communities to help understand, identify and own any water quality issues. To help this, additional water quality and habitat data is going to be collected (in addition to what the regional council is collecting). Results will be shared with the community along with developing an understand of how land management can influence the results.



WORK STREAM 2: Delivery of Farm Environment Management Plans and implementing good farming practice

ACE will work to bring together key primary sector, council and scientific experts to support farmers to continue learning and implementing good farming practices and support farmers to develop a farm environment plan and trial innovative practices.

WORK STREAM 3: Sediment trap construction

The ACE project is supporting farmers to receive expert help to create a network of sediment traps to act as demonstration sites as well as measuring the topsoil that is held in these traps and quantifying the nutrient value. From this, we aim to develop some guidance for farmers on cost considerations, effectiveness and how to go about developing your own sediment trap.

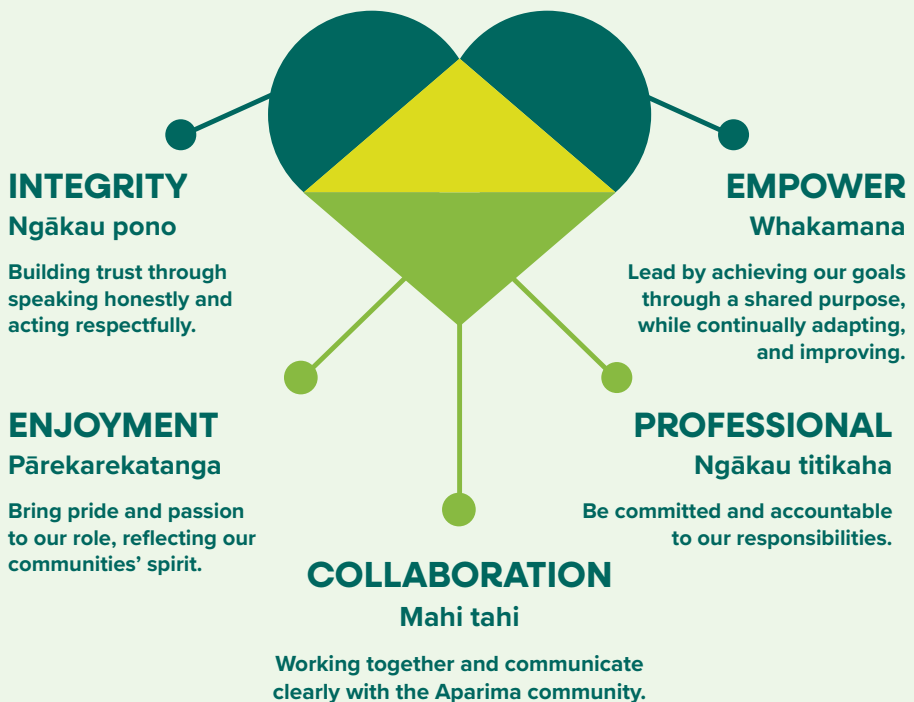
WORK STREAM 4: Exploring future solutions

With increased awareness of our impact on land and water as well as shifting consumer behavior, there is a real opportunity for the food & fibre sectors to meet these challenges.

The ACE project is working alongside a vanguard of sheep, beef, and dairy farmers and farm system experts to explore alternative farming systems and environmental mitigations that can comply with a wide range of regulations. The focus will be on working with catchment farmers to identify practical alternative systems and solutions that can be implemented by others to achieve optimal production and environmental outcomes.

OUR VALUES

**BUILDING AND SUPPORTING THE RESILIENCE OF
THE APARIMA COMMUNITY AND ENVIRONMENT.**



The solutions are ours to own, connect and innovate with your local community. Why not attend your next catchment group event?

Contact your local Catchment Group Leader:

Check out the Thriving Southland website for
your Catchment Group Leader's information.

www.thrivingsouthland.co.nz/catchment-groups



ACE support:

Rachael Halder 021 566229 | rachael@thrivingsouthland.co.nz

For more information please visit
www.thrivingsouthland.co.nz/ace



aceaparima



ACESouthland



AparimaACE@gmail.com



Aparima Community Environment

www.thrivingsouthland.co.nz/ace