

# Understanding your landscape's resilience: Beyond Regulation

## REPORT SUMMARY

### Project overview

In collaboration with Land and Water Science Ltd (LWS) and Thriving Southland, the Understanding your landscape's resilience: Beyond Regulation project was launched to address the critical need for sustainable land management practices in the Matura catchment. Funded by the Agmardt Food and Fibres Aotearoa New Zealand Challenge, this innovative project aimed to identify targeted mitigations to reduce environmental impacts while aligning with farmers' goals and supporting financial resilience.

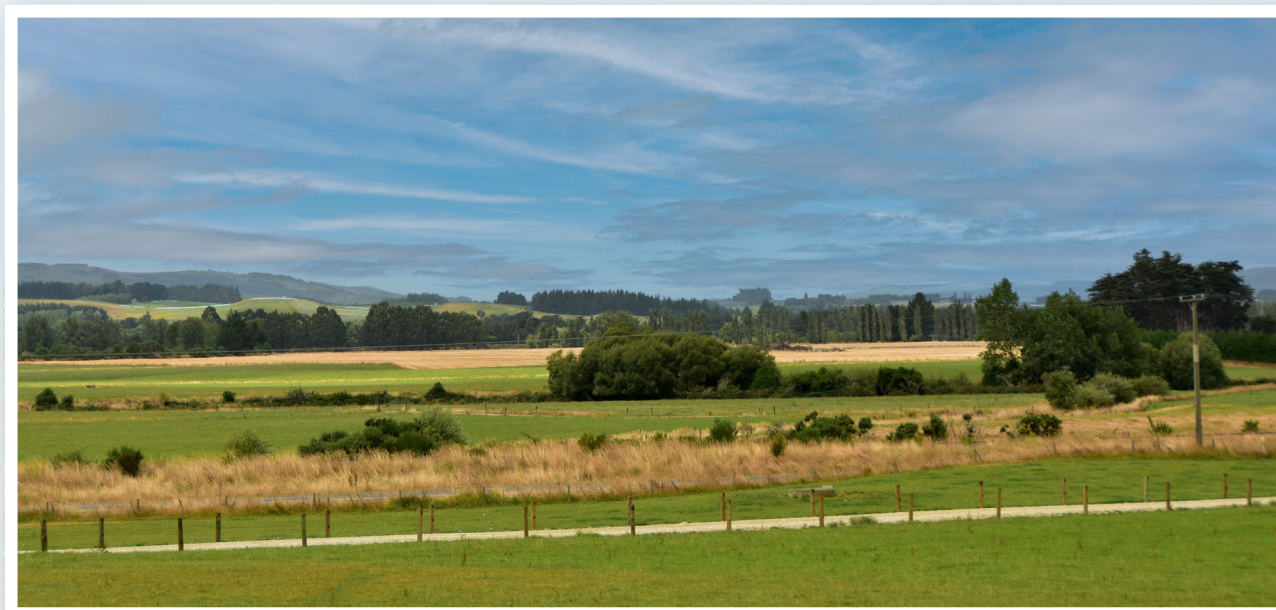
### Holistic approach

The project adopted a holistic approach, leveraging advanced scientific landscape data and comprehensive farm system analysis to develop effective mitigation pathways for soil, greenhouse gas and water quality emissions. Through high-resolution physiographic mapping and farm system assessments, valuable insights were provided at both catchment and farm scales, empowering land users to meet their environmental responsibilities effectively.

## KEY INSIGHTS FROM CASE STUDIES:

- » **Case Study 1:** A dairy farm near Brydone demonstrated the efficacy of bundling low-cost farm system mitigations with landscape interventions to reduce contaminants effectively.
- » **Case Study 2:** A sheep and cattle farm near Wendonside highlighted the significance of aligning hydrology and landscape susceptibility insights to guide investments in minimising losses.
- » **Case Study 3:** An arable farm near Balfour emphasised the importance of targeting nutrient applications and treating contaminants leaving the farm boundary to reduce environmental impact effectively.





## Extension programme

A robust extension programme, including interactive field days, digital resources, stakeholder meetings, and targeted conference presentations, ensured the widespread dissemination of project findings to the broader community. Ongoing engagement with Catchment Groups and individual farmers remains a cornerstone of the project's strategy, facilitating the continuous exchange of insights and supporting the widespread adoption of sustainable practices.

## Future recommendations

Looking ahead, further collaboration and dissemination of findings will be paramount in driving positive change and enhancing the overall environmental health of the catchment. Recommendations include addressing existing gaps in forestry integration, wetland implementation, lower intensity land use change, and policy support. The project aims to expand its reach through comprehensive training programmes and the development of accessible resources, ensuring the widespread adoption of sustainable practices not only within the Maitara catchment but further afield.

For more information and to read the full report, visit  
[www.thrivingsouthland.co.nz/beyond-regulation-maitara-catchment-project](http://www.thrivingsouthland.co.nz/beyond-regulation-maitara-catchment-project)