

ANNUAL REPORT

2023-24



**THRIVING
SOUTHLAND**

*Tōnui ana te whenua. Tōnui ana te takata.
A thriving, prosperous land. A thriving, prosperous people.*



A message from Chair, Jeff Grant and Project Lead, Richard Kyte

Welcome to the 2023-24 Thriving Southland Annual Report. This report highlights the many projects, events, and activities that Thriving Southland has facilitated, supported, or led over the past year.

It's been a great year! With new Catchment Groups being formed, taking the total to 37, and with more than 1,500 farmers and community members now actively participating, the number of events has also grown, with increasing engagement from farmers across the region.

The projects happening within Southland's farms and catchments are inspiring, and the science and data being produced here is gaining national attention, helping to drive significant impact.

From the practical insights of winter grazing tours and native plant propagation to innovative projects like the Beyond Regulation initiative, it's been a standout year for collaboration and knowledge sharing. There's also been a focus on resilience and wellbeing, with workshops and events designed to support the mental and physical health of our rural communities.

A highlight of the year was the Southland AgriTech and Innovation Day, where more than 300 people came together to explore the latest advancements in technology, genetics, and smart farming practices.

Catchment Groups have shown true leadership, pushing forward projects that balance the need for sustainable practices with the realities of farming today. We're seeing tangible progress, from water quality improvements to pest control strategies. There's no doubt that the collective effort of these groups is having a far-reaching impact, not just in Southland but across New Zealand.

Thank you to MPI and our other funding supporters for their on-going support of Thriving Southland, which makes these achievements possible.

Looking ahead, many Catchment Groups are now leveraging funding from other providers to take their projects to the next level. The Edendale Aquifer Group, for example, is working on a project to better understand nutrient movement and mitigation opportunities in their diverse landscape, collaborating with local industries and exploring innovative monitoring techniques. Similarly, the Balfour Catchment Group continues to tackle its nitrate challenges head-on with a science-backed project aimed at mitigation and reducing groundwater contamination. These groups are leading the way in collaborative solutions, showing how local initiatives can secure wider support to make real, lasting change.

HERE'S TO ANOTHER YEAR OF INSPIRING COMMUNITY ACTION!



How we work



Jeff Grant
Independent Chair



Kate Scott
Vice Chair



Richard Kyte
Project Lead

Board of Directors

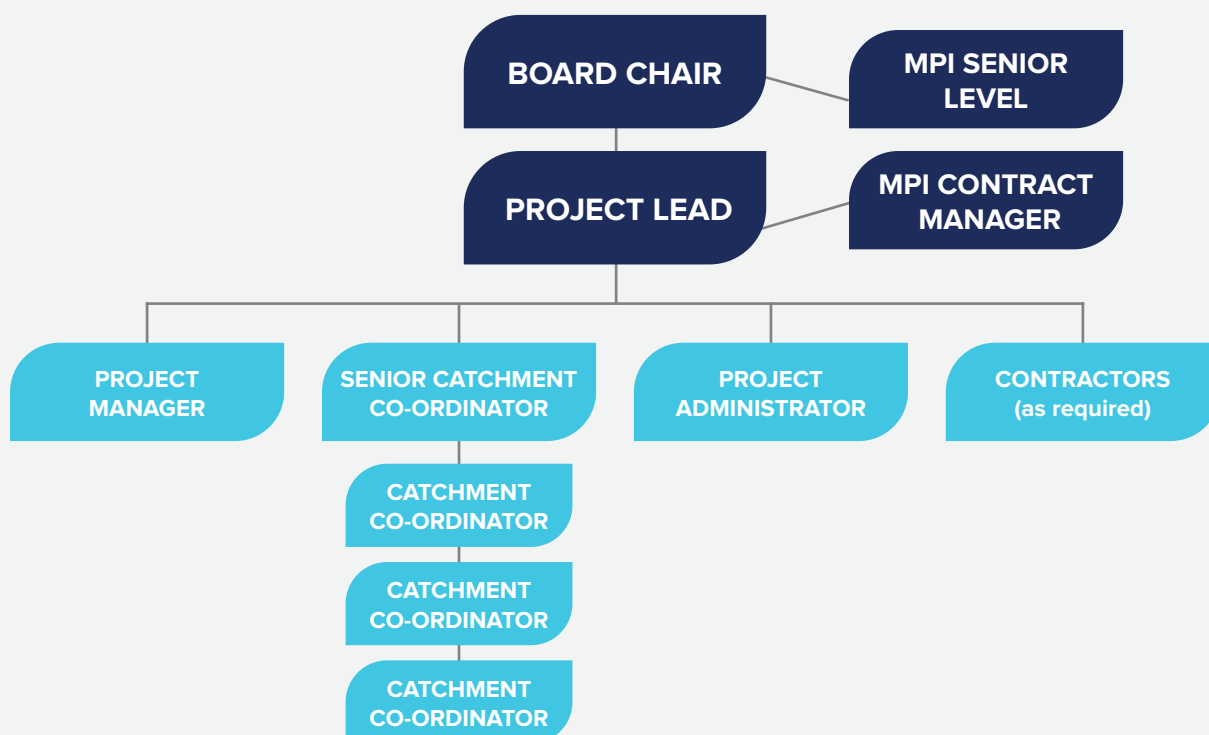
Bernadine Balle-Guilleux
(Independent)

Neil Gardyne
Ewen Mathieson
John White

Anna Irwin
(Associate Member)

Operational Structure

(with linkage to Governance and Funder)



Thriving Southland's purpose is to

INSPIRE COMMUNITY ACTION

Thriving Southland is underpinned by its values.

At Thriving Southland we do...



Brilliant

Brilliant is facing our challenges head on, being prepared to work hard for success, and always celebrating our achievements.



Collaborative

Our best collaboration comes from being honest, acting with integrity, and being prepared to learn from others. Through collaboration we will deliver results.



Community

Community is at the centre of everything we do. Our success comes from connecting others, and empowering communities to thrive for the future of our children.



Inspiration

We will inspire greatness through our passion. Our passion for Southland and its communities is at the heart of who we are.

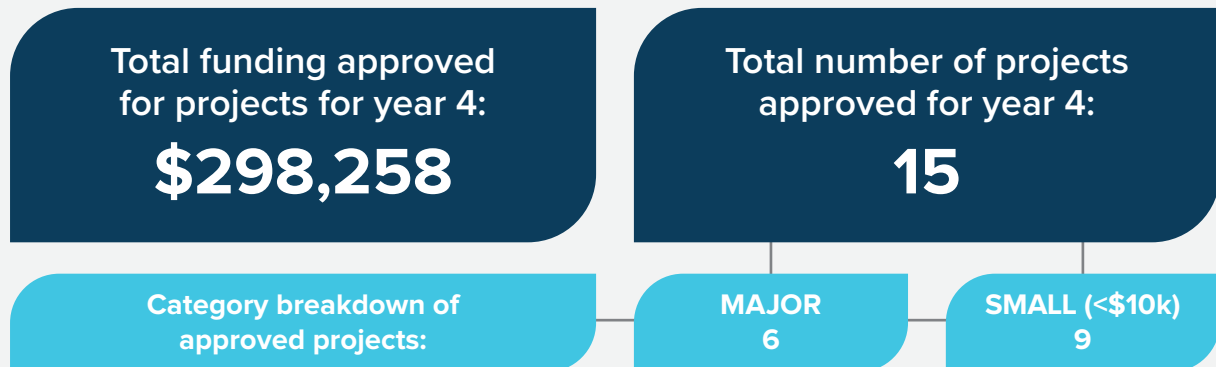


Solutions

We encourage innovation, foster opportunity and seek outcomes through on the ground action.

Catchment Group members maintained that Thriving Southland contributes to farmers' improved sense of wellbeing.

Catchment Projects funded by the MPI Innovation and Acceleration Project



Of the 15 projects approved this financial year for Catchment Groups, there have been some fantastic examples of community-led initiatives.

- » The Waimatuku Group organised a beach clean-up at the Waimatuku Stream mouth back in March, rallying volunteers to help tidy up their backyard.
- » The Glenham Catchment Group explored new ways to monitor biodiversity in their waterways through environmental DNA (eDNA) testing.
- » The Gore/Waimumu Group took action with their 'Slow the Flow' project, learning how to create low-cost, natural structures to slow water flow and reduce erosion in hill country land.
- » Another notable initiative is the Makarewa Headwaters Revival Project, which has been addressing the feral animal problem in the Hokonui Hills. Phase One involved a comprehensive landowner survey to assess the extent of damage caused by ungulates including deer, pigs, as well as other pests. In November 2023, the Catchment Group hosted a successful community event where local farmers and residents gathered to learn about the project's efforts to tackle feral animals. The findings are now being used to guide next steps, with the goal of reducing the impact on local ecosystems and improving biodiversity.

These impactful projects highlight the diverse approaches Catchment Groups are taking to address environmental and community challenges.

EDENDALE AQUIFER PROJECT

Formed in March 2024, the Edendale Aquifer Group is a sub-catchment of the Three Rivers Catchment Group. Located on the western side of Edendale, from the Mataura River to the Edendale Terraces, the Group stays connected with the wider Three Rivers Group for collaborative efforts on larger projects.

The Edendale Aquifer Group is focused on exploring the movement and mitigation of nutrients, particularly nitrogen, within the Edendale landscape. With a diverse mix of land uses in the area, including dairy and sheep farming, unique crops like tulips and potatoes, and major industry players like Fonterra and Daiken, the Group is undertaking this exciting new project.



Projects not funded by the Innovation and Acceleration Project

In addition to MPI's Innovation and Acceleration Project, several Catchment Group initiatives received support from other sources.

The **Community Trust of Southland** granted \$20,000 for engagement, wellbeing, and knowledge-sharing projects. Notable examples include the South Coast Catchment Group's recycling session with Kate Fenwick from Waste ED, and Between the Domes Catchment Group hosting Jack Cocks, a sheep and beef farmer, who shared his story about resilience in farming.

BNZ also contributed \$8,000, supporting over 20 projects across Southland Catchment Groups, ranging from community engagement and wellbeing to environmental projects.

As part of the Southland Just Transition programme, which is funded through **Ministry of Business, Innovation and Employment (MBIE)**, we have continued working on the Southland Food & Fibre project. In early 2023, the project team collaborated with key regional stakeholders to identify scalable opportunities. From June to August 2023, an online engagement process allowed the public to submit ideas, leading to a productive workshop in October 2023 where farmers and landowners refined their contributions.

By November 2023, the Project Advisory Group prioritised seven strategic opportunities: Precision Fermentation, Establishing a Niche Food and Fibre Enterprise, Regional Processing Solutions, Industrial Food Ingredients Sector, On-Farm Energy and Biomass Technology, Developing Local Markets through Food and Beverage Tourism, and the Industrial Hemp Sector. The next step will be to produce blueprints which will provide practical information and guidance to help inform future landowner decision making and investment.

UNDERSTANDING YOUR LANDSCAPE'S RESILIENCE: BEYOND REGULATION

Building on last year's efforts, the *Understanding Your Landscape's Resilience: Beyond Regulation* project continues to address the need for sustainable land management in the Maitara Catchment through collaboration between Land and Water Science Ltd (LWS) and Thriving Southland.

Funded by the Agmardt Food and Fibres Aotearoa New Zealand Challenge, this initiative aimed to identify targeted mitigations to reduce environmental impacts while aligning with farmers' goals and regulatory requirements.

The project used a holistic approach, combining advanced landscape data and in-depth farm system analysis to develop mitigation pathways for soil, greenhouse gas, and water quality outcomes. Through high-resolution physiographic mapping and comprehensive assessments, it provided insights at both catchment and farm scales, helping land users meet environmental obligations.

Three case studies – dairy, sheep and beef, and arable farming systems – demonstrated the practical application of scientific insights. By bundling farm system mitigations with landscape interventions, farmers effectively reduced contaminants while maintaining financial resilience, highlighting the importance of integrated strategies.



An extension programme, including field days, digital resources, meetings, and presentations, shared project findings widely. Ongoing engagement with farmers and catchment groups will allow them to further this work and its positive results.

The project has provided valuable insights into environmental challenges in the Matura Catchment. Future efforts will focus on addressing gaps in forestry integration, wetland implementation, land use change, and policy support. The project aims to expand through training programmes and accessible resources, promoting sustainable practices within and beyond the Matura Catchment.

KEY LEARNINGS:

- » **Case study 1:** A Brydone dairy farm showed that bundling low-cost mitigations with landscape interventions can reduce contaminants. Strategies like retiring sidling areas and reducing grazing intensity were more effective than capital-intensive options like loafing barns.
- » **Case study 2:** A Wendonside sheep and cattle farm underscored the value of aligning hydrology and landscape susceptibility insights for guiding investments, focusing on farm system changes, wetland installation, and forestry integration.
- » **Case study 3:** An arable farm in Balfour targeted nutrient applications and treated contaminants leaving the farm. Upfront investment in wetlands was necessary, but strategies like adjusting crop rotations and nutrient targeting reduced nitrate accumulation.

These case studies illustrate how scientific insights can shape tailored mitigation solutions, fostering collaboration between farmers and Catchment Groups, and promoting long-term resilience.



Supporting Catchment Groups

PROVIDING CATCHMENT GROUPS WITH ENABLING TOOLS AND ENGAGEMENT OPPORTUNITIES

Providing on-the-ground support has been invaluable to enable Catchment Group meetings and events which bring people together with a common goal being to inform and connect.

Over the year there have been **165 catchment meetings** and events with more than **2,000 attendees**.

Catchment Group Leaders Forum

Held on 28 November 2023 at Otapiri Hall, with approximately **70 attendees**. Local chef Ethan Flack cooked and shared his story about using local produce. The Makarewa Headwaters Catchment Group presented on their feral animal control project.

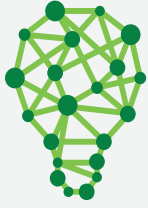
Canva Training

Provided to interested Catchment Group members, equipping them with skills to create newsletters and communications for their groups. This training was funded by BNZ and delivered by Lemon Creative.

Cherries and Hops Field Trip

More than **40 people participated** in a visit to the zero fossil fuel cherry orchard in Cromwell and the Garston hops operation.





Southern AgriTech and Innovation Day

More than 300 people attended the Southland AgriTech and Innovation Day on 2 May, which featured an impressive range of inspiring speakers and workshops. Thriving Southland, with support from the Gore/Waimumu Catchment Group, hosted the event at the Southern Field Days site in Waimumu.

The event focused on the latest advancements in farming technology and innovation, tailored to the unique needs of the southern farming community.

The line-up of speakers included AgriTech New Zealand chief executive Brendan O'Connell, who said that while New Zealand farmers are already world leaders, there is substantial potential to bring more homegrown innovation to the global stage.

A panel discussion on genetic modification (GM) featured prominent voices including Professor Caroline Saunders, an expert in sustainable wellbeing, farmer and biotech pioneer Dr. William Rolleston, and renowned biotechnologist Dr. Tony Connor. The panel advocated for a more informed national dialogue around GM and gene editing, and affirmed that New Zealand farmers embracing GM or gene editing could coexist alongside those choosing to remain GE-free.



The event also featured a series of 'Innovation Stations' that showcased New Zealand's cutting-edge sustainable practices and emerging technologies, such as spray drones and robotic animals.

Canterbury farmer Duncan Humm aptly summarised the sentiment of the day, stating: ***"Knowledge is probably the most powerful tool we've got."***

We couldn't have done this without our sponsors.

Resources / Science

GOOD SH*T LIST

Our farmers have been hard at work making positive changes on their farms, and we're excited to share the highlights.

From winter grazing plans to riparian planting and soil testing, here's a snapshot of the great stuff happening on farms across Southland over the past year. What's on your list?

To read the full survey summary, visit:

www.thrivingsouthland.co.nz/annual-survey/



INSPIRING CATCHMENT GROUP PROJECTS BOOKLET: EMPOWERING CHANGE AND INNOVATION IN SOUTHLAND

At Thriving Southland, our goal is to equip local Catchment Groups with the tools and support they need to address regional challenges. Through the dedicated work of our Catchment Group coordinators, we help these groups bring projects to life, sparking community involvement and environmental action.

We extend a big thank you to the farmers and community members who are the backbone of these groups. Their hard work is making a difference in Southland's backyards, driving positive change for our environment, economy and local heritage.

The Inspiring Catchment Group Projects booklet highlights the incredible work happening across Southland from 2021 to 2023. It showcases eight major projects, four landscape science initiatives, and several smaller yet impactful projects. From improving water quality and restoring wetlands to exploring alternative farming practices and enhancing biodiversity, these initiatives are helping shape the future of our region.

For more details on these remarkable projects and additional initiatives led by Southland Catchment Groups, visit www.thrivingsouthland.co.nz/resources

THE VITAL ROLE OF SCIENCE IN CATCHMENT GROUP INITIATIVES

In the dynamic world of sustainable land management, science serves as a cornerstone for the activities and initiatives led by Catchment Groups across Southland. By leveraging scientific research and tools, these groups are making significant strides in addressing environmental challenges and promoting resilient agricultural practices.

SLOW THE FLOW: Erosion Reduction in Hill Country

The Gore/Waimumu Group has embraced the power of science through their 'Slow the Flow' project, which focuses on creating low-cost, natural structures to slow water flow and reduce erosion in hill country areas. By exploring existing sediment traps and identifying untouched areas like swales and critical source points, the group is discovering opportunities for substantial impact through small changes upstream.

MAPS INTO ACTION: Empowering Farmers and Rural Professionals

In September 2023, the Makarewa Hedgehope Catchment Group conducted 'Maps into Action' sessions for farmers and rural professionals, focusing on how to utilise cutting-edge landscape susceptibility maps. These sessions provided practical training in interpreting the maps to inform environmental decisions and investments on properties. Covering the entire Makarewa catchment area, including the Hedgehope Makarewa and Makarewa Headwaters, the maps are now available online, offering a valuable resource for landowners seeking to target mitigations effectively.

SCIENCE RESEARCH FOR FARMERS: Practical Applications

In June 2024, the Aparima Community Environment (ACE) project organised an event to connect farmers with independent scientific research. In collaboration with the Our Land and Water National Science Challenge, this event featured leading researchers discussing practical applications of their findings for rural communities. Participants explored local scenarios that offered actionable insights for sustainable farming practices, highlighting the role of research in shaping the future of the primary sector.

SOURCE TO STREAM WORKSHOP: Hands-On Learning

The Titiroa Catchment Group hosted an engaging Source to Stream workshop in June 2024, turning a rainy day into an opportunity for farm-scale exploration. Participants gained valuable insights into identifying productive areas of their farms, the sources of nutrients, and understanding the pathways and receiving environments that influence water quality.

RURAL LANDOWNERS GUIDE: Capturing the Value of Carbon Sequestration for Tōtara Forests

In September 2023, Thriving Southland, in collaboration with MBIE, Agri Intel, and Te Tapu o Tāne, released a guide titled *Capturing the Value of Carbon Sequestration for Tōtara Forests*.

Tōtara is a large, long-lived evergreen podocarp tree indigenous to New Zealand, growing up to 30 meters high. It holds immense cultural significance for Māori, regarded as a taonga (treasure), traditionally used for canoes, houses, and carvings. Its durability made it highly sought-after for construction, and it retains significant value as timber today. This guide provides insights on generating on-farm benefits through Tōtara plantings.

Developed by Agri Intel and Te Tapu o Tāne, this user guide aims to inform farmers and rural landowners about the carbon sequestration opportunities associated with Tōtara.

Tōtara plays a vital role in our ecological and cultural landscape. Planting and restoring native forests not only sequester carbon, providing potential income for landowners, but also enhance natural landscapes, biodiversity, and cultural values. The guide is available to download here: www.thrivingouthland.co.nz/resources

The integration of science into the initiatives of Catchment Groups not only enhances understanding of the environment but also empowers land users to make informed decisions for sustainable land management. Through projects like Slow the Flow, and the Maps into Action sessions, these groups are fostering a culture of collaboration and learning, ensuring that Southland's landscapes remain resilient for generations to come.

ANNUAL SURVEY

The 2024 Thriving Southland Catchment Group Annual Survey received 201 responses from a diverse group of farmers and stakeholders within the region. The majority of respondents have over ten years of farming experience, primarily in sheep, beef, dairy, or dairy support farming. A significant portion of the responses came from those representing the Mataura River catchment.

Continuing a trend from previous surveys, the respondents' main goals over the past five years included enhancing profitability, improving wellbeing, and increasing resilience and productivity. Notably, **reducing costs emerged as a key goal for 67% of respondents**, reflecting the current cost of living crisis.

Interest in wintering systems as a Good Management Practice (GMP) has increased by 8% compared to 2023. The most commonly adopted GMPs remain consistent, including fertiliser use, application, and riparian planting. Respondents still seek advice from fellow farmers (67%) and sector support (54%).

While optimism has slightly decreased, participation in social activities outside of work has increased. Over 60% reported supporting fellow farmers through practical assistance and events. Certainty regarding information on rules and regulations remains a key support area, along with a growing interest in succession planning.

This year's survey included a new question about future goals, revealing that over 70% were aware of their next steps.

Thriving Southland continues to provide valuable opportunities for participation in Catchment Groups, with over a quarter of respondents recognising the benefits of access to leadership, science, and research. Although interaction between Catchment Groups and local iwi remains limited, engagement is improving.

Respondents expressed pride in sustainability efforts and the production of quality products, highlighting their historical connections to the land and commitment to its improvement for future generations.



For the complete survey results, please visit www.thrivingsouthland.co.nz/annual-survey



Building relationships

STAKEHOLDER ENGAGEMENT

In February 2024, the Thriving Southland team had the pleasure of engaging with more than 287 people who visited our site over the three days of the Southern Field Days at Waimumu. It was fantastic to see both Catchment Group members and newcomers dropping by to say hello and learn more about the role of Catchment Groups in Southland.

The steady flow of visitors reinforced the importance of events like these, providing opportunities to connect, share knowledge, and strengthen relationships within our rural communities. The growing interest in Catchment Groups and their work shows how significant these grassroots movements have become.



A stakeholder breakfast was held on 10 April 2024, attracting more than 50 attendees. The event provided an update on Catchment Group activities and featured a presentation from a local farmer, who shared on-farm experiences with mitigation options developed through the Beyond Regulation project case study, offering practical examples of how the project's findings are being applied.

PARTNERSHIP WITH MOUNTAINS TO SEA CONSERVATION TRUST

We were approached by the Trust to become a Service Provider for the Wai Connection project in Southland. This will fund a full-time Catchment Coordinator position and create opportunities to bring Wai Connection programmes to the region.

AGM IN WINTON

Held on 15 November 2023, featuring guest speaker Mike Casey from Forest Lodge Orchard. Mike shared insights on his pioneering work at the world's first 100% electric, zero fossil fuel orchard, offering a balanced and pragmatic view of New Zealand's potential to lead in sustainable agriculture.



Thriving Southland communications activities

Thriving Southland's brand continues to be highly recognised, not just within Southland but also beyond, as demonstrated by increasing engagement from farmers, Catchment Groups, and stakeholders outside the region.

Both Thriving Southland and Catchment Groups have established themselves as key voices in the area, supported by a robust website, informative videos, a popular monthly newsletter, strategic radio ads, regular interviews, a strong presence across both paid and organic social media, geo-targeted digital campaigns, and positive media coverage.

KEY COMMUNICATIONS AND MARKETING ACTIVITIES



NEWSLETTER

By June 2024, **1,491 people** received the newsletter every month, achieving well over industry norm open and click rates (**42.32% compared to 23.3%** industry norm open rates and 4% click rate compared to 2.94% industry norm).



WEBSITE

Website views have continued to increase over the last 12 months with a strong **40% increase** in page views, from 25,582 visits in 22/2 to more than **36,000 visits** this year. The increase is a testament to the work and information provided on the website by the team, along with boosts from targeted social media campaigns. Specific project pages remain popular and highly ranked, and the "About us" page continues to rank as the most visited page on the site (after the Homepage). For example, the home page achieved almost 5,000 views, **About Us page 2,300 views** and Agritech, Makarewa Headwaters and Events over 15,000 views.



MARKETING

Throughout the year, Thriving Southland ran a wide range of targeted digital marketing campaigns on various platforms, including Southland Times/ Stuff and Otago Daily Times to raise awareness of Thriving Southland and to promote the Beyond Regulation project, the Southland Food & Fibre project campaign, ACE at a Glance, Carbon Neutral Dipton, the Pragmatica report, the Family Farm Succession campaign, the Wintering Plan, as well as events, the AGM, and the Southern Agritech and Innovation Day.

A full-page print ad was placed in Farming First, a publication **delivered to 19k RD Box Holders** in Southland. Two half page ads and three-quarter page ads were placed in the new community newspaper Southern Outlook – a free publication that gets delivered every Tuesday to more than **25k mailboxes** in Southland. A quarter page ad was also placed in the farming pages of the Southland Times.



MEDIA

Over the year, a range of news stories and opinion pieces have appeared across multiple publications and media channels, from TV, to radio, print and online.

There has been a **minimum of nine stories per quarter**, including coverage of the ground-breaking Understanding Our Land to Drive Change soil mapping project, ACE celebrating its three year project completion, the Southern AgriTech and Innovation Day 2024, innovative projects like the farm bale wrap recycling pilot, articles on field days and more.



FACEBOOK

Facebook ad campaigns have been particularly successful, resulting in more than **10,276 link clicks** and **1,249,300 impressions**, achieving an average click through rate (**CTR**) of **1.88%** (industry norm is 0.89%).



RADIO

Eight interviews aired on Hokonui's The Muster over the past year. All radio segments are shared on Thriving Southland's social media and uploaded on the website. The Muster is Southland's only local farming radio show, drawing an engaged audience. **More than 10,000 daily listeners** tune in, with even more streaming segments online days after the show airs. It's not just farmers – businesses in the rural sector rely on this trusted source for local updates.

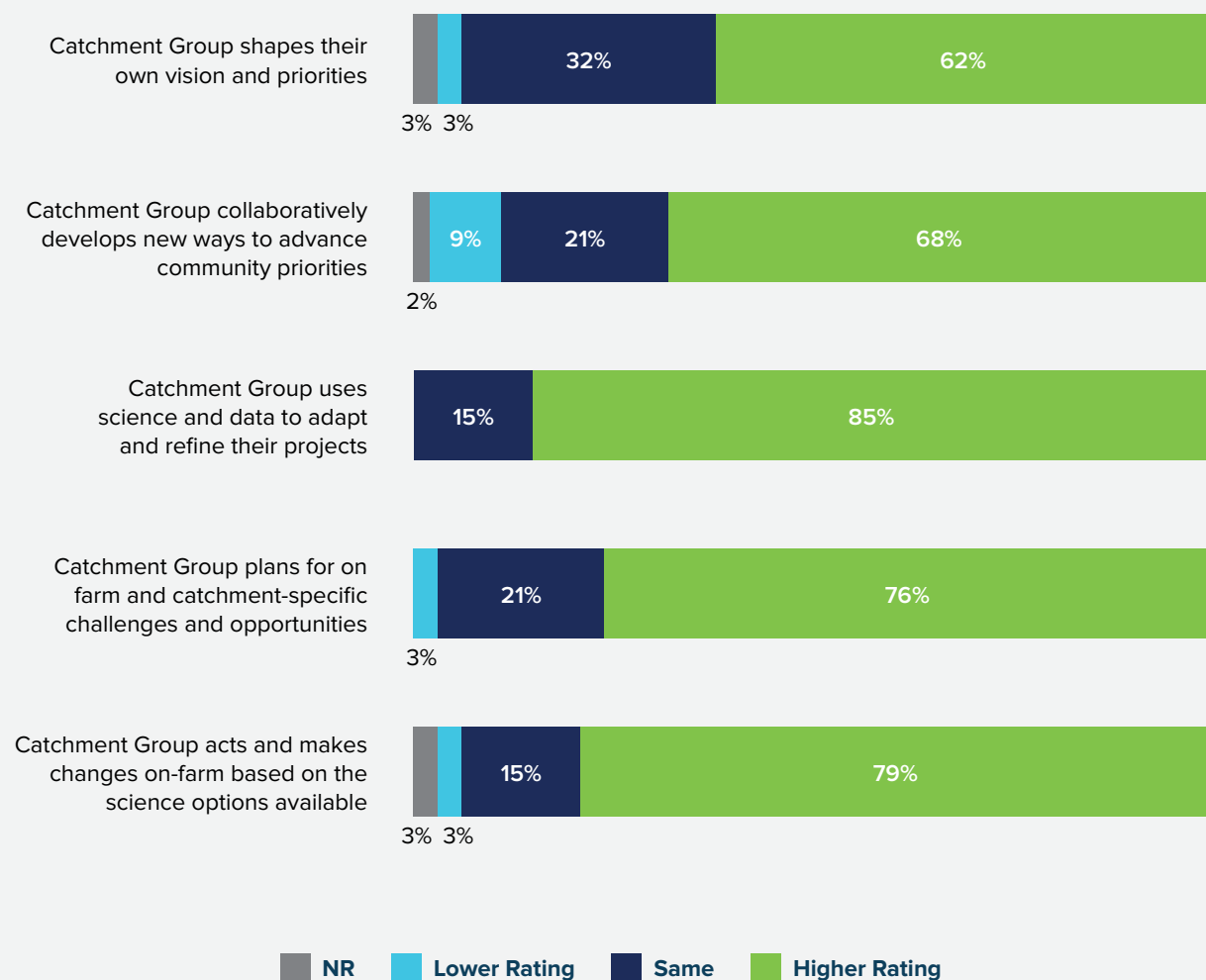
In addition to the regular Muster interviews, there has also been targeted radio advertising activity, including **80 radio commercials** on The Rock and More FM as part of a Mediaworks radio ad campaign to promote the Southland Food & Fibre project.

Mediaworks also created an advertising jingle for Thriving Southland – a form of catchy and distinct sound branding that allows our radio adverts to be instantly recognisable among our target audience in future.

Thriving Southland facilitates improved outcomes for farmers

AN INDEPENDENT EVALUATION 2024

The majority Catchment Group representatives surveyed said that now after receiving Thriving Southland's help their group was better able to do the following activities



Statement of Service Performance

Thriving Southland supports and enables the community to create and lead innovations that build community wellbeing, environmental improvements and education and research across rural – and in many cases urban – communities. It all helps build the movement towards change in agriculture and farming.

We do this by supporting Catchment Groups with funding for their projects, their meetings and events that bring people together. Thriving Southland also invests in useful and targeted data-led science, modelling and case studies for increased learning and knowledge across Southland's agricultural sector.

We use a range of different communication channels, including a strong focus on collaboration, to ensure information, tools, advice and learnings are shared between rural and urban communities.

	2023-2024	2022-2023
Projects Projects have ranged from small projects, where the objectives were to support engagement and connecting, through to recycling and learning how the landscape influences water quality and larger projects looking at erosion mitigations and understanding how nutrients flow through the catchment.	» 23 projects approved	» 57 projects approved
Community Wellbeing Enabling and supporting catchment group meetings and events which bring people together with a common goal and to inform and connect people.	» 165 catchment meetings and events » Total attendance of 2,284	» 186 catchment meetings and events » Total attendance of 3,057
Education and Learning Providing science reports, information, tools and workshops to Catchment Groups that enables informed decisions.	» Workshops x 29 » Field days x 14 » Catchment Group Leader Forum x 1 » Southern AgriTech and Innovation day with keynote speakers, farmer panel, workshops and exhibitors » Exploring positive family farm succession report » Value of Carbon Sequestration for Tōtara Forests report	» Workshops x 25 » Field days x 31 » Catchment Group Leader Forums x 2 » Education Kits created around growing natives, healthy estuary, healthy stream and pest control » Updated online information hub providing information broken down into themes
Communication Different channels set up to effectively communicate with catchment members, communities and stakeholders.	» Facebook reach 56,300 » Monthly newsletter 1,497 with open rate of 45% (industry avg 23%) » Website page views 3.1k	» Facebook reach 30,223 » Monthly newsletter 1,430 with open rate of 46% (industry avg 23%) » Website page views 3.5k

Financials

Full Financial Statements

The full audited Financial Statements for the year ending 30 June 2024 for Thriving Southland have been summarised for this Annual Report.

The Financial Statements have been prepared in accordance with Tier 2 not-for-profit PBE Standards: The Incorporated Society qualifies for a lower reporting Tier 3 as for the two most recent reporting periods it is not publicly accountable and not large (operating expenditure has been less than \$5m in the current and prior period) but has elected to 'opt-up' into Tier 2.

The full Financial Statements have been audited and were authorised for issue on 8 Nov 2024.

This summarised financial report has not been audited and may not contain sufficient information for a full understanding of the financial position of Thriving Southland, but copies of the full Financial Statements and the auditors report can be obtained from the Thriving Southland Office or from the Charities Services website following the AGM.

FINANCIAL PERFORMANCE

	2024	2023
Income		
Ministry for Primary Industries Grant	1,200,000	1,993,523
Agmardt Contract Income	51,154	231,277
MBIE Contract Income (Just Transitions)	44,913	128,589
Our Land and Water National Science Challenge	18,905	31,095
Wai Connection	3,890	-
Other Income	508	-
Sponsorship	7,800	-
Interest	690	846
Total Income	1,327,859	2,385,331

Expenses

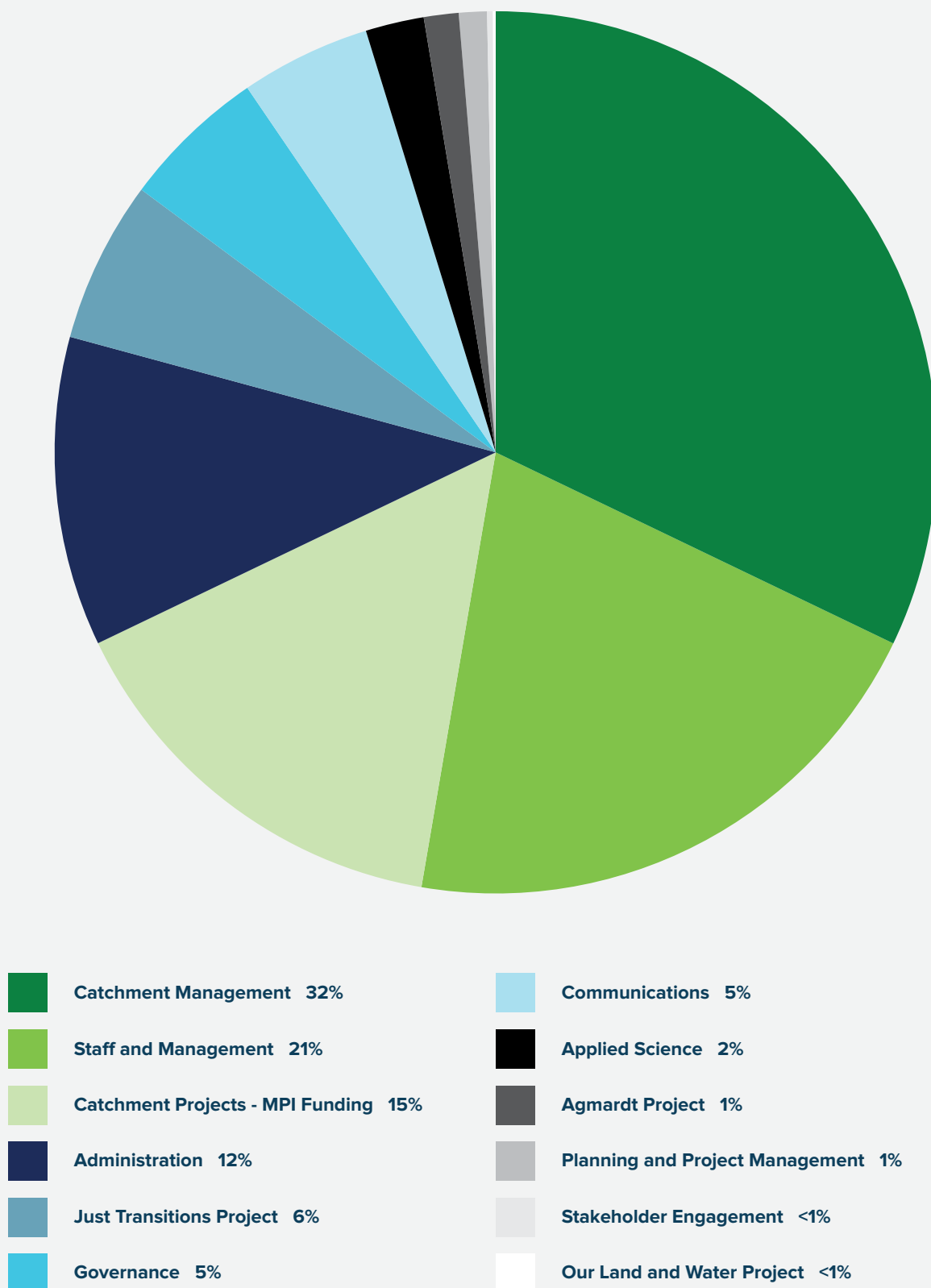
Catchment Projects - MPI Funding	198,247	515,629
Agmardt Project	16,602	194,848
Just Transitions Project	77,495	84,649
Our Land and Water Project	1,360	533
Catchment Management	419,504	432,241
Applied Science	27,964	102,367
Communications	62,235	112,487
Stakeholder Engagement	2,743	2,930
Governance	69,540	99,113
Staff and Management	268,512	303,513
Planning and Project Management	13,415	32,601
Administration	148,057	189,718
Total Expenses	1,305,674	2,070,629
Net Surplus (Deficit)	22,185	314,700

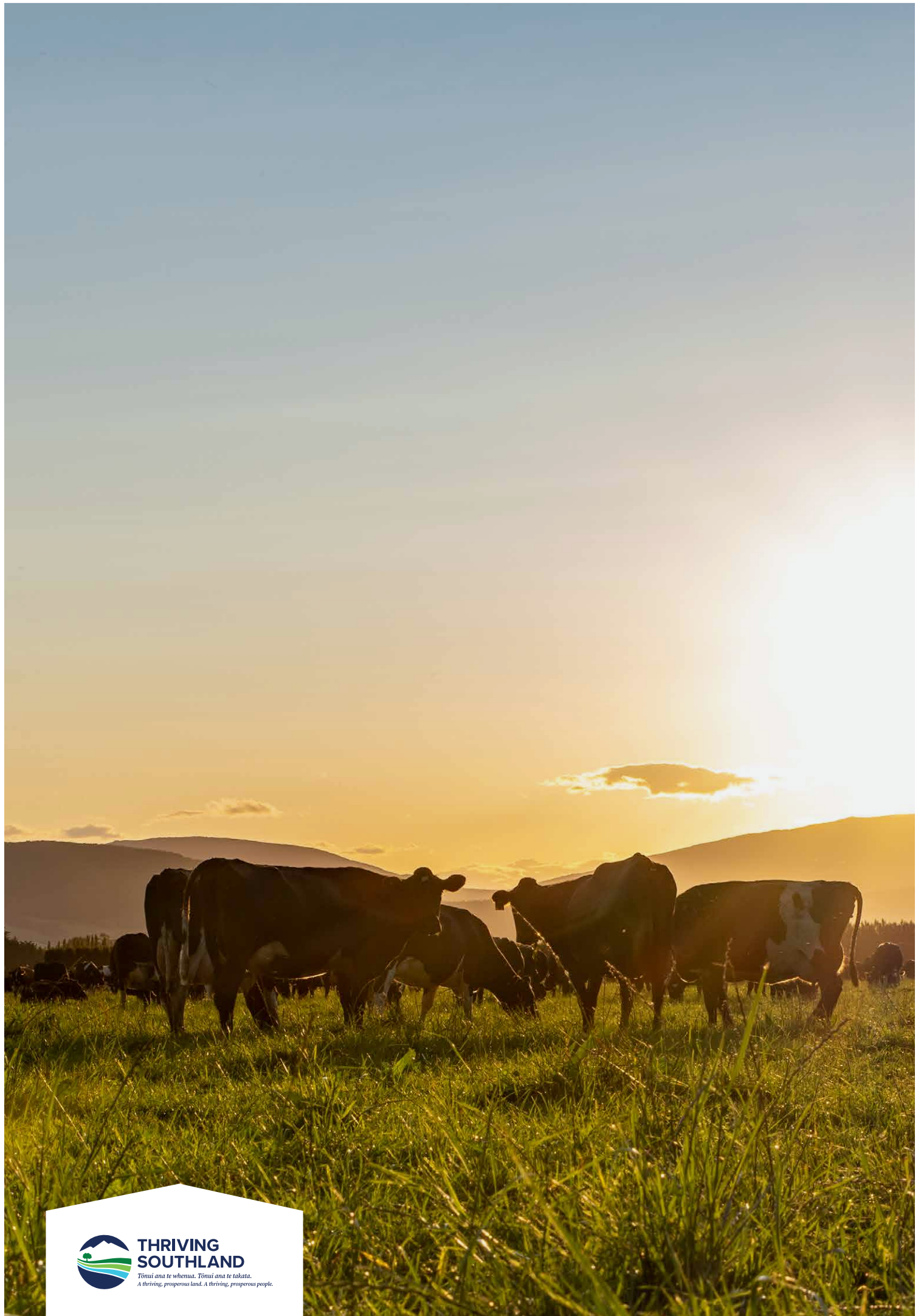
FINANCIAL POSITION

Current Assets	713,295	1,510,424
Current Liabilities	599,487	1,418,800
Net Assets	113,809	91,624

Financials

2024 Expenses





**THRIVING
SOUTHLAND**

*Tōnui ana te whenua. Tōnui ana te takata.
A thriving, prosperous land. A thriving, prosperous people.*